

7150

Max. Lifting Capacity: **150** Metric Tons at **5** Meters

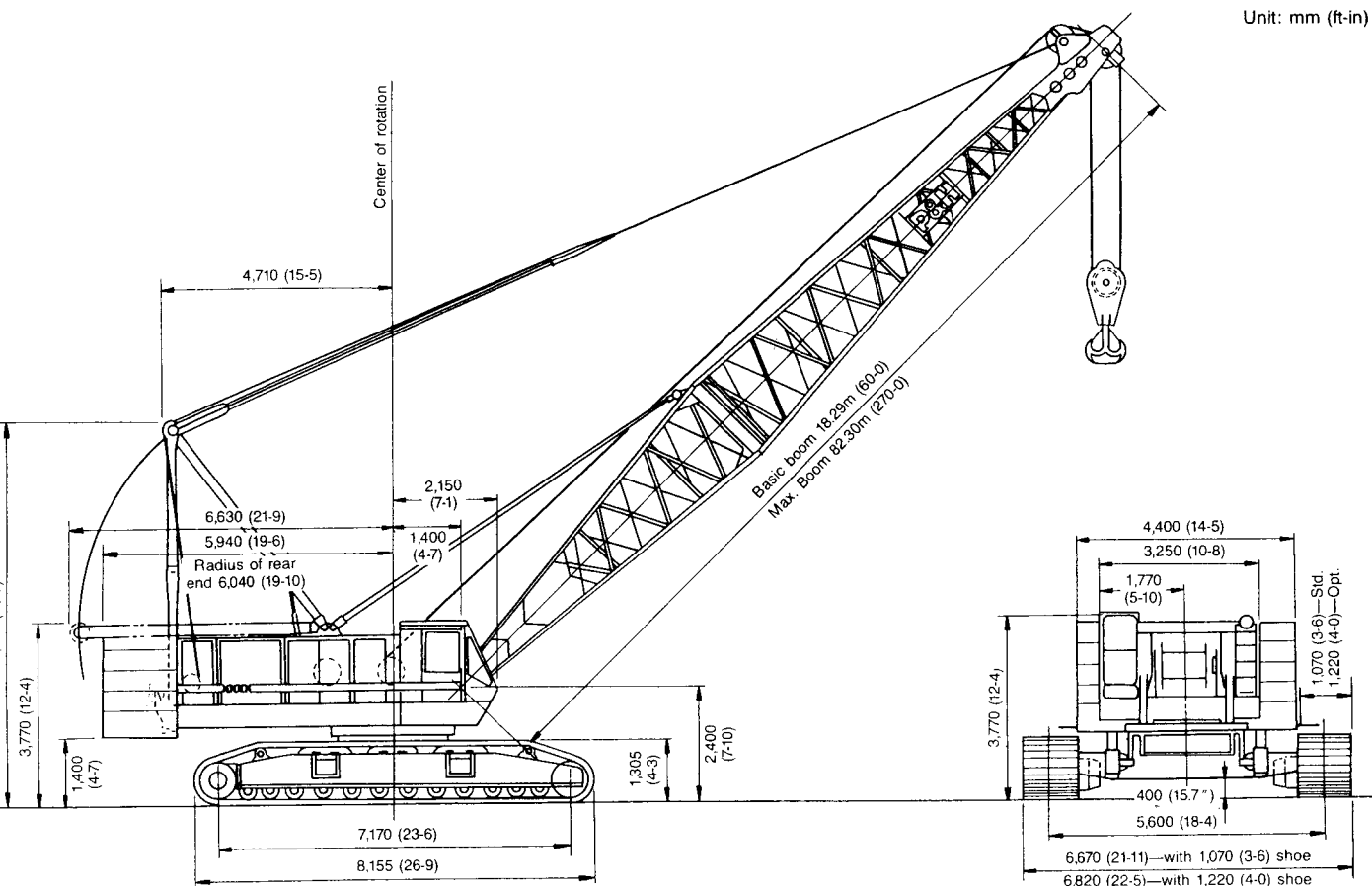
Max. Total Length (Boom+Luffing Jib): **99.36** Meters

Specifications

- Advanced winch system delivers a wide range of precisely controlled hoisting speeds, and the fastest hoisting in its class.
- Large main and auxiliary drums can be run simultaneously or independently, at different speeds and in opposite directions, according to your needs.
- Two-speed propel system features high speed for travel, low for superior break-out force.
- Precise swing speed control allows for delicate inching operations.
- Direct fuel injection in an intercooled turbo engine delivers dependable performance with top fuel economy.

General Dimensions

Unit: mm (ft-in)



Safety devices: Hook over-hoist alarm and shut-off switch, boom over-hoist limit switch, boom angle indicator, signal horn, boom hoist and front and rear drum locks, swing lock, boom back stop, hook safety latch and optional load moment limiter (overload protection device) are provided.



Gantry

Folding type, fitted with sheave frame for boom hoist reeving. Lowers toward rear onto cab roof. Hydraulic lift is standard. Full up, full down positions with linkage.

Counterweight

Five-piece stack, mounted behind the machinery compartment.

Total weight..... 54,000kg (119,000lb)



Tools

Tool set and accessories for routine machine maintenance are provided.

Lower machinery

Carbody: Steel-welded carbody with an integral seat designed for pin-connected axles.

Crawler: Crawler assemblies designed with a quick disconnect feature that allows complete individual removal from the axles. Crawler belt tension is maintained by hydraulic jack force on the track-adjusting bearing block.

Crawler drive: Independent hydraulic propel drive is built into each side frame, each with a hydraulic motor propelling a driving tumbler through a planetary gear box.

Crawler brakes: Spring-set, hydraulically released multiple-disc parking brakes are built into each propel drive.

Steering mechanism: A hydraulic propel system provides both skid steering (driving one track only) and counter-rotating steering (driving tracks in opposite directions).

Track rollers: 12 lower rollers and 2 upper rollers are fitted to each side frame, all permanently sealed and maintenance-free.

Shoes:

Number 62 each side
 Standard flat shoe width 1,070mm (42")
 (optional extra 1,220mm (48"))

Max. travel speed:

High range 1.2km/h (0.75mph)
 Low range 0.6km/h (0.37mph)

Max. gradeability: 30%

Carbody counterweight (optional)

A two-piece carbody counterweight and an additional counterweight can be optionally specified for mounting on the carbody to increase lifting capacity.

Carbody counterweight 20,000kg (44,100lb)

Additional counterweight 8,300kg (18,300lb)

Trans-Lifter (optional): Trans-Lifter system allows quick and easy crawler side frame removal and trailer loading. 4 vertical cylinders lift the basic machine for self-loading onto trailer. 2 horizontal cylinders facilitate side frames for removal or replacement.

Crane attachment



Boom:

Welded lattice construction using tubular, high-tensile steel cords with pin connections between sections.

Max. lifting capacity	150,000kg (330,000lb)
Basic boom length	18.29m (60')
Max. boom length	82.30m (270')



Jib (optional):

Welded lattice construction using tubular, high-tensile steel cords with pin connections between sections.

		Fixed jib	Luffing jib
Max. lifting capacity	(kg)	15,000	20,000
Max. jib length	(m)	30.48	45.72
Max. total length (Boom length + jib length)	(m)	73.15 + 30.48	53.64 + 45.72



Hook blocks

A range of hook blocks can be specified, each with a safety latch.

Lifting capacity	150 tons	65 tons	25 tons	12 tons
No. of sheaves	7	3	1	0
Weight (kg)	2,200	1,100	700	450

Diameter of wire ropes

Standard:

Hook hoist 26mm (1.02")
 Boom hoist (16-part line) 20mm (0.79")
 Boom pendants (4-part line) 32mm (1.26")

Optional:

Jib hook hoist 26mm (1.02")
 Jib back stay pendants (2-part line) 26mm (1.02")
 Boom midpoint suspension 22mm (0.08")

Weight

Working weight: Approx. 150,000kg (330,000lb)
 (including 18.29m (60ft) boom and 150ton hook block)

Ground pressure: 0.93kg/cm² with 1,070mm (42") shoes.

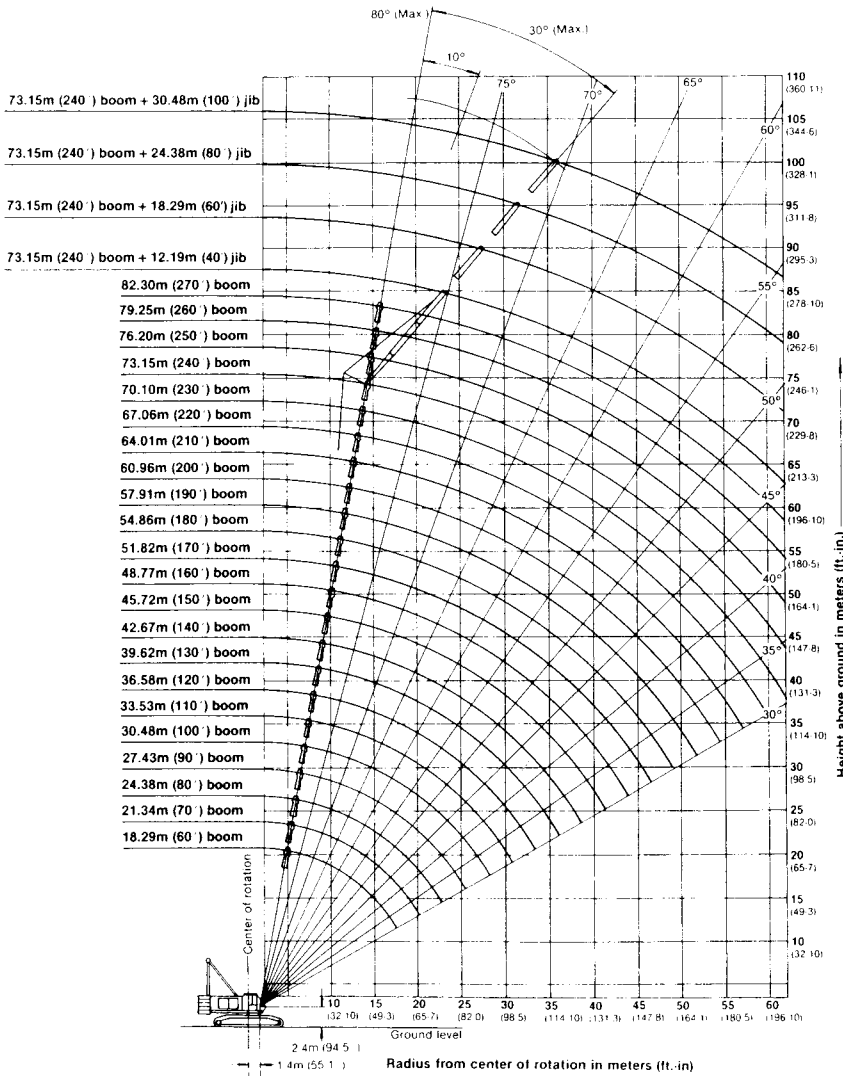
Lifting Capacities

The following points should be kept in mind when interpreting the ratings given below.

1. Operating radius is the horizontal distance from center of rotation to the hoist load line or tackle with load applied.
2. Rated loads do not exceed 75% of tipping loads, and include weights of the load, hook blocks, slings and other lifting devices.
3. Rated loads are for stationary and level cranes lifting a freely suspended load, and have been determined for ideal operating conditions. The user must limit or derate lifted loads to allow for adverse conditions (such as soft or uneven ground, out-of-level conditions, winds, side loads, pendulum action, jerking or sudden stopping of loads, inexperience of personnel, multiple machine lifts and traveling with a load.)
4. Gantry must be in fully raised position for all operations.
5. Crawlers must be fully extended and be locked in position.
6. The crane must be leveled to within 1% on a firm supporting surface.
7. When lifting over boom point with auxiliary sheave, rated loads for the boom must be deducted 450 kg.
8. Midpoint suspensions are required for booms 64.01 m (210') and longer.

9. Boom lengths for jib mounting are 45.72 m (150') to 73.15 m (240').
10. The boom should be erected over the front of the crawlers, not laterally.
11. At radii and boom length where no ratings are shown on plate operation is not intended or approved.
12. Mast required when boom length is 60.96 m (200') or longer.
13. Boom insert and guy cables must be arranged as shown in the "Owner and Operator's Manual."
14. Lifting capacities shown within the heavy lines are limited by the strength of the boom.
15. Do not operate the machine with loads that exceed those shown.

Working Ranges (with fixed jib)



Boom Component Chart

Boom length m (ft)	Boom arrangement
18.29 (60)	Base-Tip
21.34 (70)	Base-A-Tip
24.38 (80)	Base-B-Tip
27.43 (90)	Base-C-Tip
30.48 (100)	Base-A-C-Tip
33.53 (110)	Base-B-C-Tip
36.58 (120)	Base-A-B-C-Tip
39.62 (130)	Base-A-C-C-Tip
42.67 (140)	Base-B-C-C-Tip
45.72 (150)	Base-C-C-C-Tip
48.77 (160)	Base-A-C-C-C-Tip
51.82 (170)	Base-B-C-C-C-Tip
54.86 (180)	Base-A-B-C-C-C-Tip
57.91 (190)	Base-A-A-B-C-C-C-Tip
60.96 (200)	Base-A-C-C-C-D-Tip
64.01 (210)	Base-A-A-C-C-C-D-Tip
67.06 (220)	Base-A-A-C-C-D-D-Tip
70.10 (230)	Base-A-B-C-C-D-D-Tip
73.15 (240)	Base-A-B-C-C-A-D-D-Tip
76.20 (250)	Base-A-A-C-C-C-D-D-Tip
79.25 (260)	Base-A-B-C-C-C-D-D-Tip
82.30 (270)	Base-A-B-C-C-A-C-D-D-Tip

Base = 7.62 m (25'), Tip = 10.7 m (35')
 Inserts: A = 3.05 m (10'), B = 6.10 m (20'),
 C = 9.14 m (30'), D = 12.19 m (40')

Jib Component Chart

Jib length m (ft)	Jib arrangement
12.19 (40)	Base-A-Tip
18.29 (60)	Base-A-B-Tip
24.38 (80)	Base-A-B-B-Tip
30.48 (100)	Base-A-B-B-B-Tip

Base = 4.57 m (15'), Tip = 4.57 m (15')
 Insert: A = 3.05 m (10'), B = 6.10 m (20')

Boom Lifting Capacities (Standard)

Rated Loads in Metric Tons for 360° Working Area (standard)

Unit: metric ton

Boom length m (ft) Operating radius m (ft-in)	18.29 (60)	21.34 (70)	24.38 (80)	27.43 (90)	30.48 (100)	33.53 (110)	36.58 (120)	39.62 (130)	42.67 (140)	45.72 (150)	48.77 (160)	Boom length m (ft) Operating radius m (ft-in)
5 (16-5)	150.0											5 (16-5)
6 (19-8)	140.0	128.1	116.8									6 (19-8)
7 (23-0)	123.6	121.7	111.5	102.5	94.4							7 (23-0)
8 (26-3)	99.1	98.8	98.7	96.2	90.7	83.8	77.8					8 (26-3)
9 (29-6)	82.5	82.3	82.2	82.0	81.8	78.8	75.2	69.6				9 (29-6)
10 (32-10)	70.5	70.3	70.2	70.1	69.9	69.8	69.2	66.5	62.3	57.8		10 (32-10)
12 (39-4)	54.6	54.3	54.2	54.0	53.8	53.7	53.5	53.3	53.2	52.2	49.6	12 (39-4)
14 (45-11)	44.5	44.2	44.0	43.9	43.6	43.5	43.2	43.1	42.9	42.7	42.6	14 (45-11)
16 (52-6)	37.5	37.1	37.0	36.8	36.5	36.4	36.1	35.9	35.8	35.6	35.5	16 (52-6)
18 (59-0)		32.0	31.8	31.6	31.3	31.1	30.8	30.7	30.6	30.4	30.2	18 (59-0)
20 (65-7)			27.8	27.6	27.3	27.1	26.8	26.7	26.5	26.3	26.2	20 (65-7)
22 (72-2)			24.7	24.4	24.2	24.0	23.7	23.5	23.4	23.1	23.0	22 (72-2)
24 (78-9)				21.9	21.6	21.4	21.1	20.9	20.8	20.6	20.4	24 (78-9)
26 (85-4)					19.5	19.3	19.0	18.8	18.7	18.4	18.2	26 (85-4)
28 (91-10)						17.5	17.2	17.0	16.9	16.6	16.4	28 (91-10)
30 (98-5)						16.1	15.7	15.5	15.4	15.1	14.9	30 (98-5)
32 (105-0)							14.4	14.2	14.0	13.8	13.6	32 (105-0)
34 (111-7)								13.1	12.9	12.7	12.5	34 (111-7)
36 (118-1)									11.9	11.7	11.5	36 (118-1)
38 (124-8)									11.1	10.8	10.6	38 (124-8)
40 (131-3)										10.1	9.8	40 (131-3)
42 (137-10)											9.1	42 (137-10)

Unit: metric ton

Boom length m (ft) Operating radius m (ft-in)	51.82 (170)	54.86 (180)	57.91 (190)	60.96 (200)	64.01 (210)	67.06 (220)	70.10 (230)	73.15 (240)	76.20 (250)	79.25 (260)	82.30 (270)	Boom length m (ft) Operating radius m (ft-in)
12 (39-4)	46.9	43.5	40.0									12 (39-4)
14 (45-11)	41.8	40.3	38.1	37.0	36.2	33.5	30.3					14 (45-11)
16 (52-6)	35.2	35.1	33.8	35.6	35.2	32.7	29.6	27.1	25.0	22.8	20.3	16 (52-6)
18 (59-1)	30.0	29.8	29.6	30.3	30.1	30.1	28.8	26.4	24.4	22.1	19.7	18 (59-1)
20 (65-7)	25.9	25.7	25.5	26.2	25.9	25.9	25.9	25.7	23.8	21.6	19.2	20 (65-7)
22 (72-2)	22.8	22.5	22.3	22.9	22.6	22.7	22.6	22.4	22.3	21.0	18.6	22 (72-2)
24 (78-9)	20.2	19.9	19.7	20.2	20.0	20.0	20.0	19.7	19.6	19.4	18.0	24 (78-9)
26 (85-4)	18.0	17.7	17.6	18.0	17.8	17.8	17.7	17.5	17.4	17.2	16.7	26 (85-4)
28 (91-10)	16.2	15.9	15.8	16.2	15.9	15.9	15.9	15.6	15.5	15.3	15.2	28 (91-10)
30 (98-5)	14.7	14.4	14.3	14.6	14.3	14.3	14.3	14.0	13.9	13.7	13.6	30 (98-5)
32 (105-0)	13.4	13.1	12.9	13.2	13.0	13.0	12.9	12.6	12.5	12.3	12.3	32 (105-0)
34 (111-7)	12.2	11.9	11.8	12.0	11.8	11.8	11.7	11.4	11.3	11.1	11.1	34 (111-7)
36 (118-1)	11.2	10.9	10.8	11.0	10.7	10.7	10.7	10.4	10.3	10.1	10.0	36 (118-1)
38 (124-8)	10.3	10.1	9.9	10.1	9.8	9.8	9.8	9.5	9.3	9.1	9.1	38 (124-8)
40 (131-3)	9.6	9.3	9.1	9.3	9.0	9.0	8.9	8.6	8.5	8.3	8.2	40 (131-3)
42 (137-10)	8.9	8.6	8.4	8.5	8.2	8.2	8.2	7.9	7.8	7.6	7.5	42 (137-10)
44 (144-4)	8.2	7.9	7.7	7.9	7.6	7.6	7.5	7.2	7.1	6.9	6.8	44 (144-4)
46 (150-11)	7.7	7.4	7.2	7.3	7.0	7.0	6.9	6.6	6.5	6.2	6.1	46 (150-11)
48 (157-6)		6.9	6.6	6.7	6.4	6.4	6.4	6.0	5.9	5.6	5.4	48 (157-6)
50 (164-1)			6.2	6.2	5.9	5.9	5.9	5.5	5.3	5.0	4.9	50 (164-1)
52 (170-7)				5.8	5.4	5.4	5.3	4.9	4.7	4.5	4.3	52 (170-7)
54 (177-0)				5.4	5.0	5.0	4.8	4.4	4.2	4.0	3.8	54 (177-0)
56 (183-9)					4.5	4.5	4.4	4.0	3.8	3.5	3.4	56 (183-9)
58 (190-3)						4.1	4.0	3.6	3.4	3.1	2.9	58 (190-3)
60 (196-10)							3.6	3.2	3.0	2.7	2.5	60 (196-10)
62 (203-5)							3.2	2.8	2.6	2.4	2.2	62 (203-5)